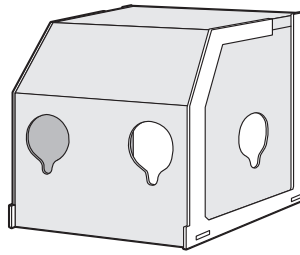


# Aerosol Box IC Box

for bed 1 piece

## Instruction Manual



JAN code Product Number 57165



GS1-128



(01) 0 4971032 57165 2

### < Contents >

- Main body..... 1 piece
- Splash-reducing plate..... 1 piece
- Treatment hole cover..... 4 pieces

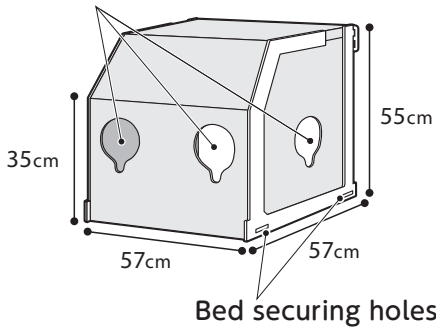
### Valley fold



### < Inner dimension >

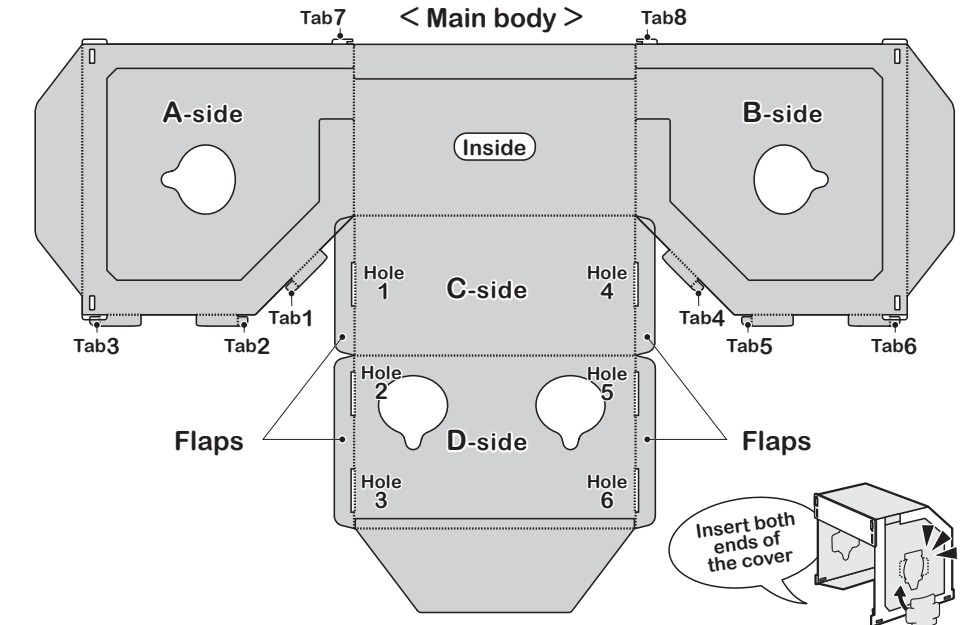
W57cm x H55cm x D57cm

### Treatment holes



Bed securing holes

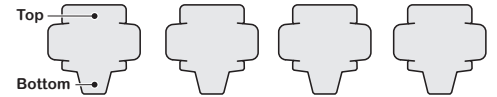
### Development diagram



### < Splash-reducing plate >

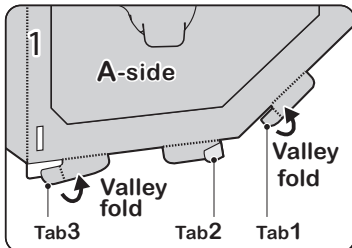


### < Treatment hole cover >

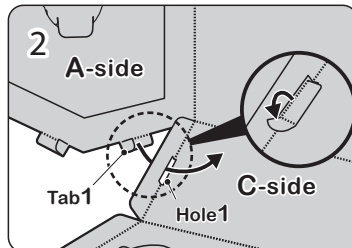


The covers are already installed in the main body's "treatment hole". The "treatment hole cover" can be removed. (Insert the cover when not in use to prevent splashing).

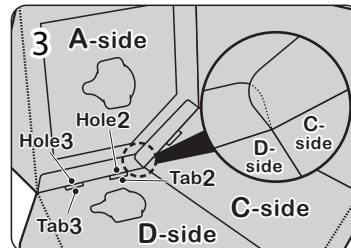
### How to assemble



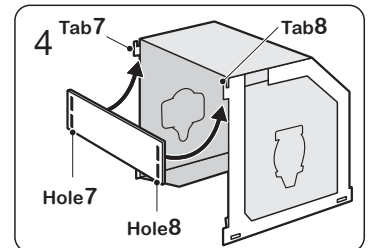
Set the box to be oriented as shown in the development diagram above, so that the white frame comes outside, make a valley fold on tabs 1 to 6.



Raise the A-side and insert tab 1 into hole1, and unfold the tab to secure it.



Make the C-side flap overlap so that it is in front of the D-side flap, insert tabs 2, 3 into holes 2, 3 and unfold the tabs to secure them. Repeat the same for the other side.



Insert tabs 7, 8 into holes 7, 8 of the splash-reducing plate (you can adjust the height by inserting it into either the upper or lower hole). By securing "the bed securing hole" and bed with string and the like, it will be more secure.

### How to care for the box:

● The box can be wiped with alcohol or sodium hypochlorite.

### Precautions for use:

- Use it only as an aerosol box.
- Do not place any objects on the box.
- Due to the nature of the assembly type, folds can cause scratches and/or cloudiness. However, they do not affect the product's strength.
- Do not place the box in places where there are high temperatures or direct sunlight as this can cause deformation.
- Keep the box away from naked flames.
- If a crack occurs in the main body, replace it with a new one.

**Osaki**  
Osaki Medical Corporation  
203, Tamaike-Cho, Nishi-Ku, Nagoya City, Aichi 452-0812,  
Japan <http://www.osakimedical.co.jp/>

MADE IN JAPAN  
132075-01  
W660xH38xD595

Material: PET, PP

Use the QR code on the side for more information on the IC box (Assembly video included).

